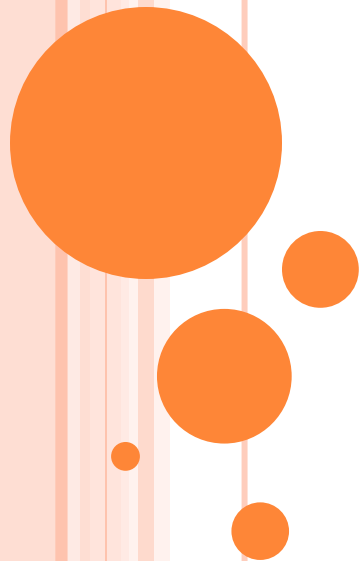


PROBLEMS IN THE ACCESS IN EDUCATION AND EMPLOYMENT FOR PEOPLE WITH MUSCULAR DYSTROPHY

**Presentation by:
Stelios Stylianou**

**Larnaca – Cyprus
3rd of October 2011**



STRUCTURE OF PRESENTATION

**Muscular
Dystrophy**

**Problems and
Difficulties**

**Matters for
Discussion**



WHAT IS MUSCULAR DYSTROPHY?

- The muscular dystrophies (MD) are a group of more than 30 genetic diseases characterized by progressive weakness and degeneration of the skeletal muscles that control movement
- Some forms of MD are seen in infancy or childhood, while others may not appear until middle age or later
- The disorders differ in terms of the distribution and extent of muscle weakness (some forms of MD also affect cardiac muscle), age of onset, rate of progression, and pattern of inheritance
- The most common types of Muscular Dystrophies are: Duchenne, Becker, Limb Girdle, FSH etc



WHAT IS THE PROGNOSIS?

- The prognosis for people with MD varies according to the type and progression of the disorder
- Some cases may be mild and progress very slowly over a normal lifespan, while others produce severe muscle weakness, functional disability, and loss of the ability to walk and use of arms
- Some children with MD die in infancy while others live into adulthood with only moderate disability



TYPES OF PROBLEMS

- Physical Problems: Due to the progress of the disease
- Accessibility Problems: Due to bad constructions
- Social Problems: Due to phenomena of prejudice



PHYSICAL PROBLEMS



TYPES OF PROBLEMS

- Physical Problems: Due to the progress of the disease
- Accessibility Problems: Due to bad constructions
- Social Problems: Due to phenomena of prejudice



ACCESSIBILITY PROBLEMS



TYPES OF PROBLEMS

- Physical Problems: Due to the progress of the disease
- Accessibility Problems: Due to bad constructions
- Social Problems: Due to phenomena of prejudice

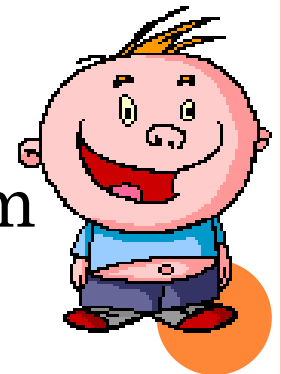


SOCIAL PROBLEMS



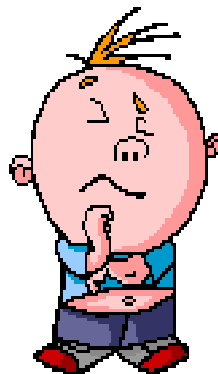
ADVANTAGES FOR INTERNET PLATFORM

- Faster and Easier access
- No need for transportation and personal assistance
- No need for adapted environment
- Easier to adapt an Internet based environment than a university classroom



MATTERS FOR DISCUSSION

- Higher chances for home isolation
- Less opportunities for socializing with other people



THANK YOU FOR YOUR ATTENTION !

Stelios Stylianou

PhD Candidate in Sociology

st.stylianou@gmail.com

